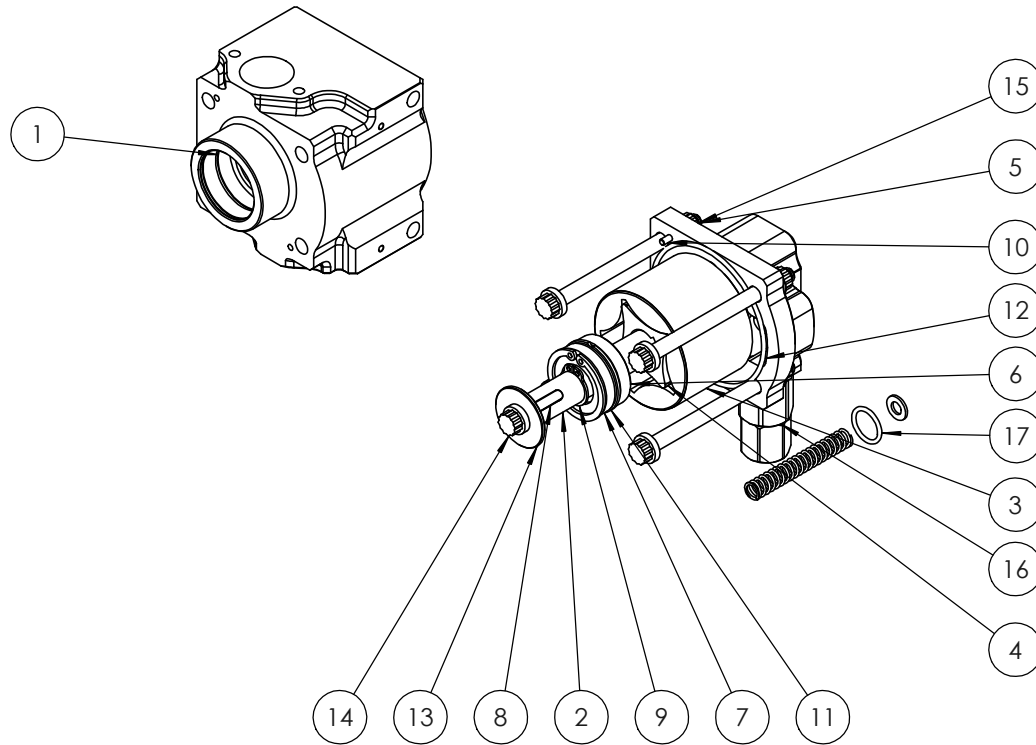

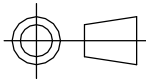


ISSUE	DESCRIPTION	ECN	DRN	CHK	DATE
01	INITIAL RELEASE	PRP-A018	S.HOW	A.CLIFTON	03/01/18

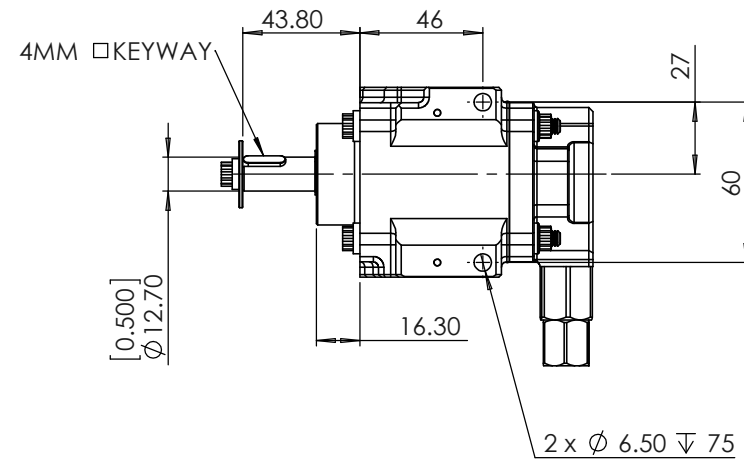
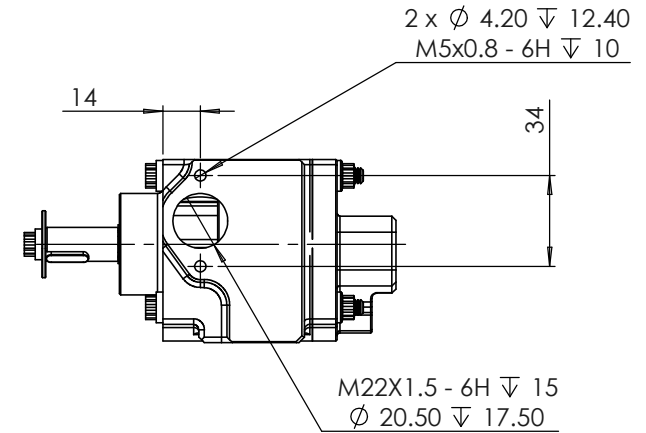
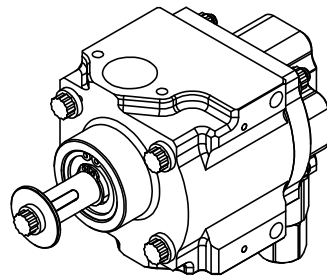
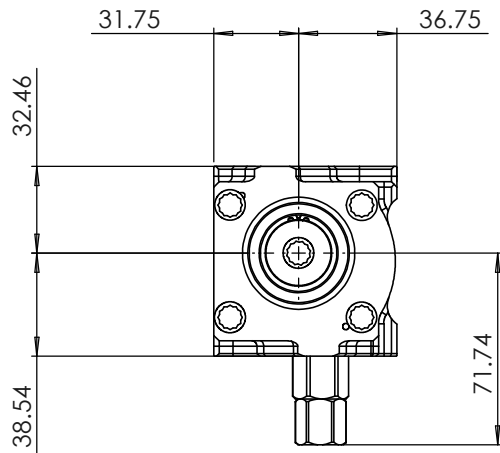



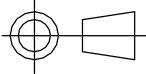
ITEM NO.	PART NUMBER	PART_DESC1	QTY.
1	104-200-00062	HOUSING - PUMP - CORDIS - STAGE 1 - FLG MNT - 35 WIDE - SHORT	1
2	104-201-00012	SHAFT - PUMP - CORDIS - SINGLE STAGE - SHORT NOSE	1
3	104-202-00006	ROTOR - OUTER - 4 LOBE - 612 x 35 DP	1
4	104-202-00005	ROTOR - INNER - 4 LOBE - 611 x 35 DP	1
5	101-101-00222	SCREW - ARP_HD - M6 x 75 - ARP	4
6	101-113-00004	BEARING - NSK - R8 - 1/2" ID x 1-1/8" x 1/4"	1
7	101-116-00002	SEAL - LIP - TWIN - METAL CAGE - 1/2" ID x 1-1/8" OD x 1/4" - R6	1
8	101-119-00002	KEYWAY - METRIC - PARALLEL - 4 x 4 x 16	2
9	101-104-00003	CIRCLIP - EXTERNAL - Ø1/2"	3
10	101-106-00002	DOWEL - 2.5 x 8	2
11	101-104-00022	CIRCLIP - INTERNAL - Ø28MM - TYPE B	2
12	101-105-00065	O-RING - 56.8 ID x 1.78 DIA	1
13	101-103-00005	WASHER - FLAT - M6 x 25 x 1.5 - LARGE	1
14	101-101-00021	SCREW - ARP_HD - M6 x 16 - ARP	1
15	101-102-00013	NUT - M6 - ARP	4
16	104-107-00019	ASSY - PRV - CORDIS - FLG FITTING	1
17	104-203-00090	PRV SERVICE KIT WITH 12 L/b SPRING	1

 COPYRIGHT (c) 2013 AT POWER LTD UNIT 9, CHESTNUT DRIVE, WYMONDHAM, NORFOLK, UK, NR18 9SB	 THIRD ANGLE PROJECTION	MATERIAL SEE COMPONENT PARTS
		FINISH SEE COMPONENT PARTS
UNLESS OTHERWISE STATED: DIMENSIONS IN MILLIMETRES TOLERANCES: LINEAR ± 0.1 ANGULAR ± 0.5° SURFACE FINISH √ = √ DRAWING STANDARDS TO ATQS 6003 DATE FORMAT: DD/MM/YY	SCALE 1:2	WEIGHT 1.2 kg
	DRAWN- S.HOW	DATE - 21/12/17
THIS DESIGN IS THE PROPERTY OF AT POWER THROTTLES LTD AND MUST NOT BE REPRODUCED OR COMMUNICATED WITHOUT AUTHORITY	CHECKED - S.HOW	DRAWING TITLE 1 STAGE CORDIS-PRESSURE PUMP-SHORT NOSE-20.1 Lt
	APPROVED - A.CLIFTON	
	CAD PLOT DO NOT SCALE	SHEET 1 of 2 A3

NOTES:

1. DISPLACEMENT PER REVERLUTION PER STAGE = 20.1 CC/REV
2. DISPLACEMENT AT 1000 RPM = 20.1 LT/MIN
3. PRV CRACKING PRESSURE:-
 MINIMUM = 2.9 BAR (42 PSI)
 MAXIMUM = 8.27 BAR (120PSI)
4. FOR EACH FULL TURN OF THE ADJUSTER THE CRACKING PRESSURE WILL INCREASE/DECREASE BY 0.25 BAR (3.6 PSI)



 COPYRIGHT (c) 2013 AT POWER LTD UNIT 9, CHESTNUT DRIVE, WYMONDHAM, NORFOLK, UK, NR18 9SB	 THIRD ANGLE PROJECTION		MATERIAL SEE COMPONENT PARTS
	SCALE 1:2	WEIGHT 1.2 kg	FINISH SEE COMPONENT PARTS
UNLESS OTHERWISE STATED: DIMENSIONS IN MILLIMETRES TOLERANCES: LINEAR ± 0.1 ANGULAR ± 0.5° SURFACE FINISH ∇ = ∇ DRAWING STANDARDS TO ATQS 6003 DATE FORMAT: DD/MM/YY	DRAWN- S.HOW	DRAWING TITLE 1 STAGE CORDIS-PRESSURE PUMP-SHORT NOSE-20.1 Lt	
THIS DESIGN IS THE PROPERTY OF AT POWER THROTTLES LTD AND MUST NOT BE REPRODUCED OR COMMUNICATED WITHOUT AUTHORITY	CHECKED - S.HOW APPROVED - A.CLIFTON	DATE - 21/12/17	DRAWING NUMBER 104-103-00077
CAD PLOT DO NOT SCALE			SHEET 2 OF 2 A3