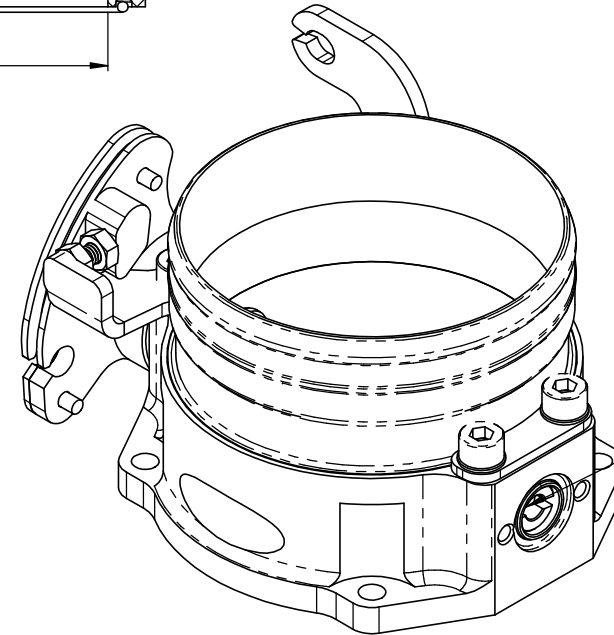
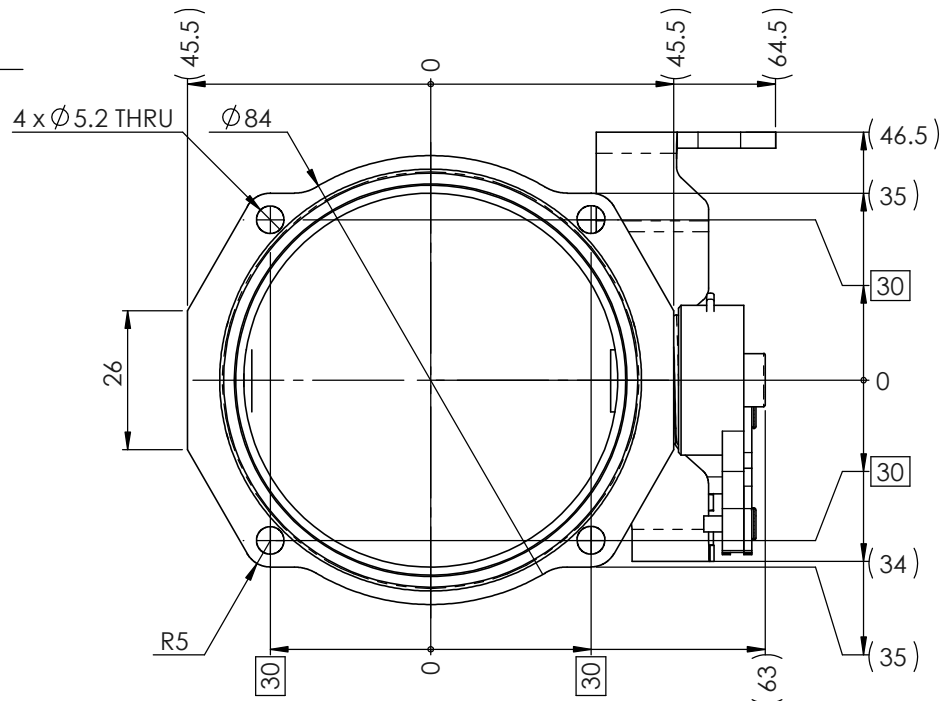


Ø76 STUB PIPE  
OUTSIDE DIAMETER  
(TO SUITE 3" HOSE)



TPS SHAFT AND  
ADAPTOR TO  
BE SPECIFIED  
BY CUSTOMER

ISOMETRIC VIEW

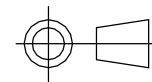


COPYRIGHT (c) 2013  
AT POWER LTD  
UNIT 9, CHESTNUT DRIVE, WYMONDHAM,  
NORFOLK, UK, NR18 9SB

UNLESS OTHERWISE STATED:  
DIMENSIONS IN MILLIMETRES  
TOLERANCES: LINEAR  $\pm 0.1$  ANGULAR  $\pm 0.5^\circ$   
SURFACE FINISH  $\sqrt{\text{A}}$  =  $\sqrt{\text{B}}$   
DRAWING STANDARDS TO ATQS 6003  
DATE FORMAT: DD/MM/YY

THIS DESIGN IS THE PROPERTY OF  
ACTIVE TECHNOLOGIES LTD AND  
MUST NOT BE REPRODUCED OR  
COMMUNICATED WITHOUT  
AUTHORITY

CAD PLOT  
DO NOT  
SCALE



THIRD ANGLE PROJECTION

SCALE  
1:1

WEIGHT  
0.3 kg

DRAWN- S.HOW

DATE - 21/10/15

CHECKED - S.HOW

APPROVED - A.CLIFTON

MATERIAL

SEE COMPONENT PARTS

FINISH

SEE COMPONENT PARTS

DRAWING TITLE

ASSY - SINGLE BORE -  
70MM

DRAWING NUMBER

102-120-00012

SHEET 2 OF 2 A3