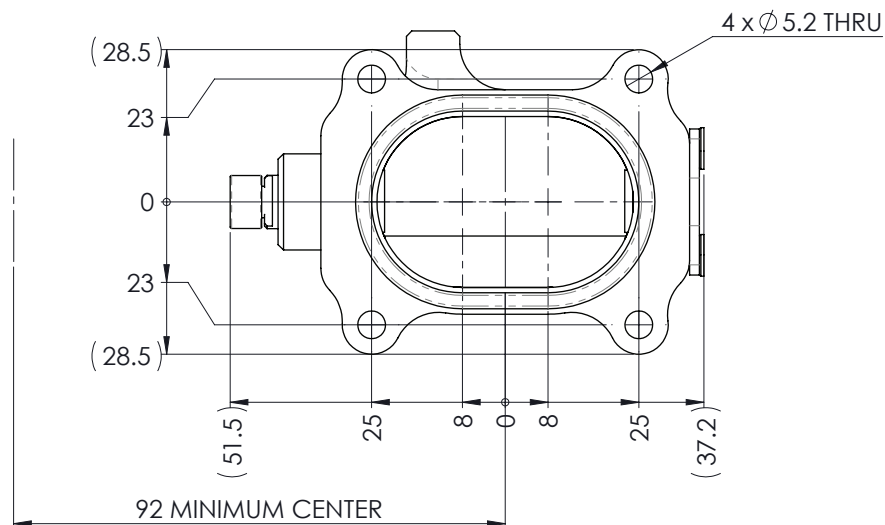


ISOMETRIC VIEW



at power

COPYRIGHT (c) 2013
 AT POWER LTD
 UNIT 9, CHESTNUT DRIVE, WYMONDHAM,
 NORFOLK, UK, NR18 9SB

THIRD ANGLE PROJECTION

SCALE 1:1

WEIGHT 0.2 kg

MATERIAL	SEE COMPONENT PARTS
FINISH	SEE COMPONENT PARTS
DRAWING TITLE	ASSY - HOUSING - SINGLE - OVAL - 42MM - NON-INJECTED
DRAWING NUMBER	102-105-00033

UNLESS OTHERWISE STATED:
 DIMENSIONS IN MILLIMETRES
 TOLERANCES: LINEAR ± 0.1 ANGULAR ± 0.5°
 SURFACE FINISH $\sqrt{\text{V}}$ = $\sqrt{\text{V}}$
 DRAWING STANDARDS TO ATQS 6003
 DATE FORMAT: DD/MM/YY

THIS DESIGN IS THE PROPERTY OF
 AT POWER THROTTLES LTD AND
 MUST NOT BE REPRODUCED OR
 COMMUNICATED WITHOUT
 AUTHORITY

DRAWN- S.HOW

DATE - 18/12/19

CHECKED - S.HOW

APPROVED - A.CLIFTON

CAD PLOT
 DO NOT
 SCALE