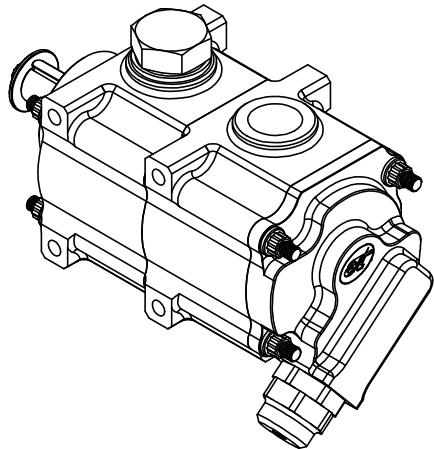
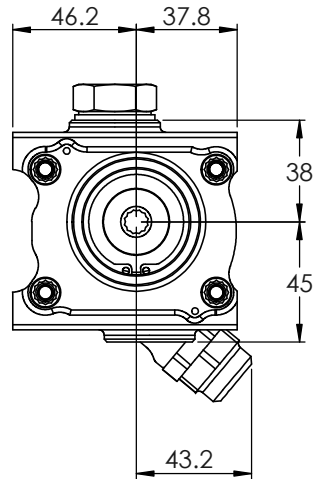
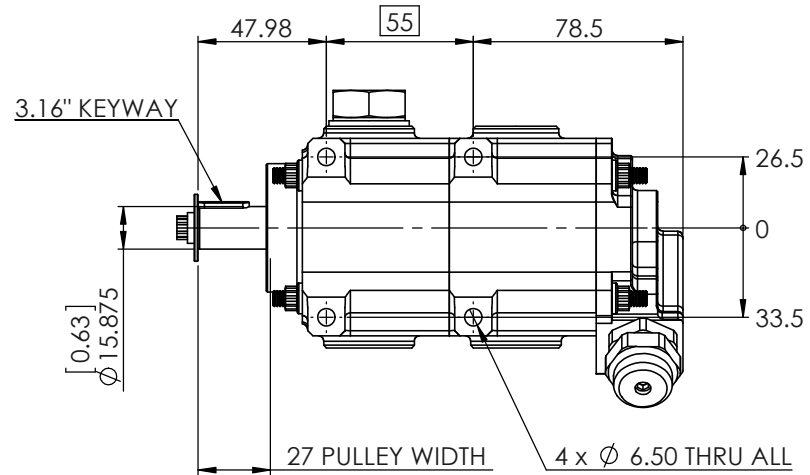
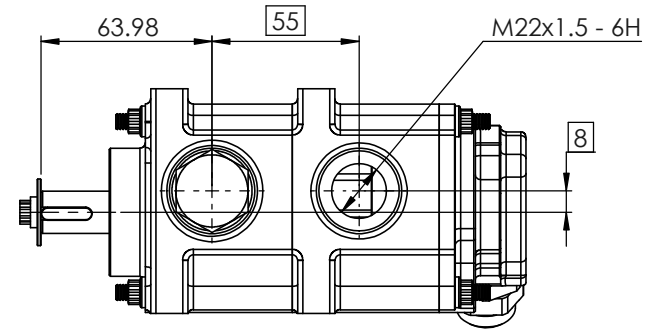


NOTES:

1. DISPLACEMENT PER REVERLUTION PER STAGE = 22.0 CC/REV
2. DISPLACEMENT AT 1000 RPM = 22.0 LT/MIN
3. PRV CRACKING PRESSURE:-
 MINIMUM = 1.4 BAR (20 PSI)
 MAXIMUM = 6.9 BAR (100PSI)
4. FOR EACH FULL TURN OF THE ADJUSTER THE CRACKING PRESSURE WILL INCREASE/DECREASE BY 0.34 BAR (5.0 PSI)


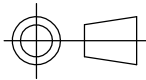


ISOMETRIC VIEW



[0.63]
 $\phi 15.875$

27 PULLEY WIDTH 4 x $\phi 6.50$ THRU ALL

 COPYRIGHT (c) 2013 AT POWER LTD UNIT 9, CHESTNUT DRIVE, WYMONDHAM, NORFOLK, UK, NR18 9SB	 THIRD ANGLE PROJECTION		MATERIAL SEE COMPONENT PART
	SCALE 1:2	WEIGHT 2.4 kg	FINISH SEE COMPONENT PART
UNLESS OTHERWISE STATED: DIMENSIONS IN MILLIMETRES TOLERANCES: LINEAR ± 0.1 ANGULAR $\pm 0.5^\circ$ SURFACE FINISH $\sqrt{\text{V}}$ = $\sqrt{\text{V}}$ DRAWING STANDARDS TO ATQS 6003 DATE FORMAT: DD/MM/YY	DRAWN- S.HOW	DRAWING TITLE 2 STAGE MAGNA CORDIS- PRESSURE PUMP-SHORT NOSE- 22.0 Ltr	
	DATE - 25/01/18	CHECKED - S.HOW	DRAWING NUMBER 104-103-00031
THIS DESIGN IS THE PROPERTY OF ACTIVE TECHNOLOGIES LTD AND MUST NOT BE REPRODUCED OR COMMUNICATED WITHOUT AUTHORITY	CAD PLOT DO NOT SCALE	APPROVED - A.CLIFTON	SHEET 2 OF 2 A3